



LOBAS ARCHITECTS
RESIDENTIAL DESIGN MONOGRAPH

Design Monograph

Selected Residential Projects
2000-2017

Christopher A. Lobas
Registered Architect (NCARB)
Current States: CO, UT, NY, FL, TX, OH
LEED Accredited Professional

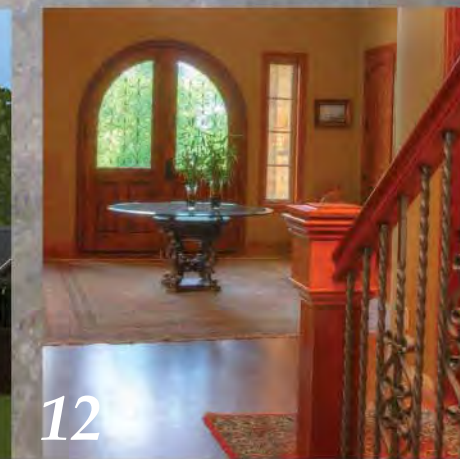
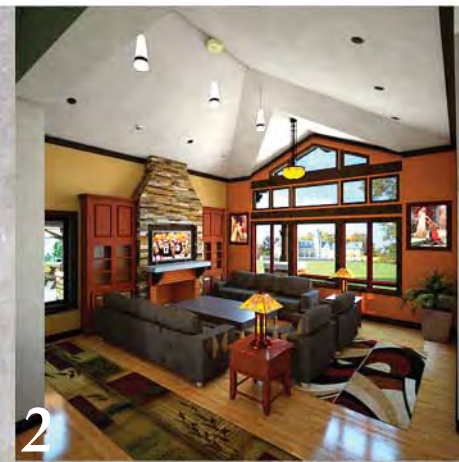
Email: Chris@LobasArch.com
Web: www.LobasArch.com
Phone: (216) 200 - 9781

LOBAS ARCHITECTS have practiced architecture for over twenty years, and through ardent study, we have developed a full source book for traditional residential design in a wide variety of historically accurate styles, all with correct forms and detailing. Also, we have experimented freely with new, evolving, and cutting-edge modern solutions.

The oldest styles depicted herein are rooted in the vernacular, like the Tuscan Vernacular, a rustic response to the hills and climate of Northern Italy. Others originate in values. The Arts & Crafts and Craftsman styles challenged the Industrial Revolution with a return to respect for tradesmen and handcrafted details. Pueblo and Texas Hill Country are distinctively American regional styles, and the Georgian Revival adapts a British model to a stateside setting.

In this abbreviated design monograph we invite you to experience the very finest traditional and modern Architectural Design.

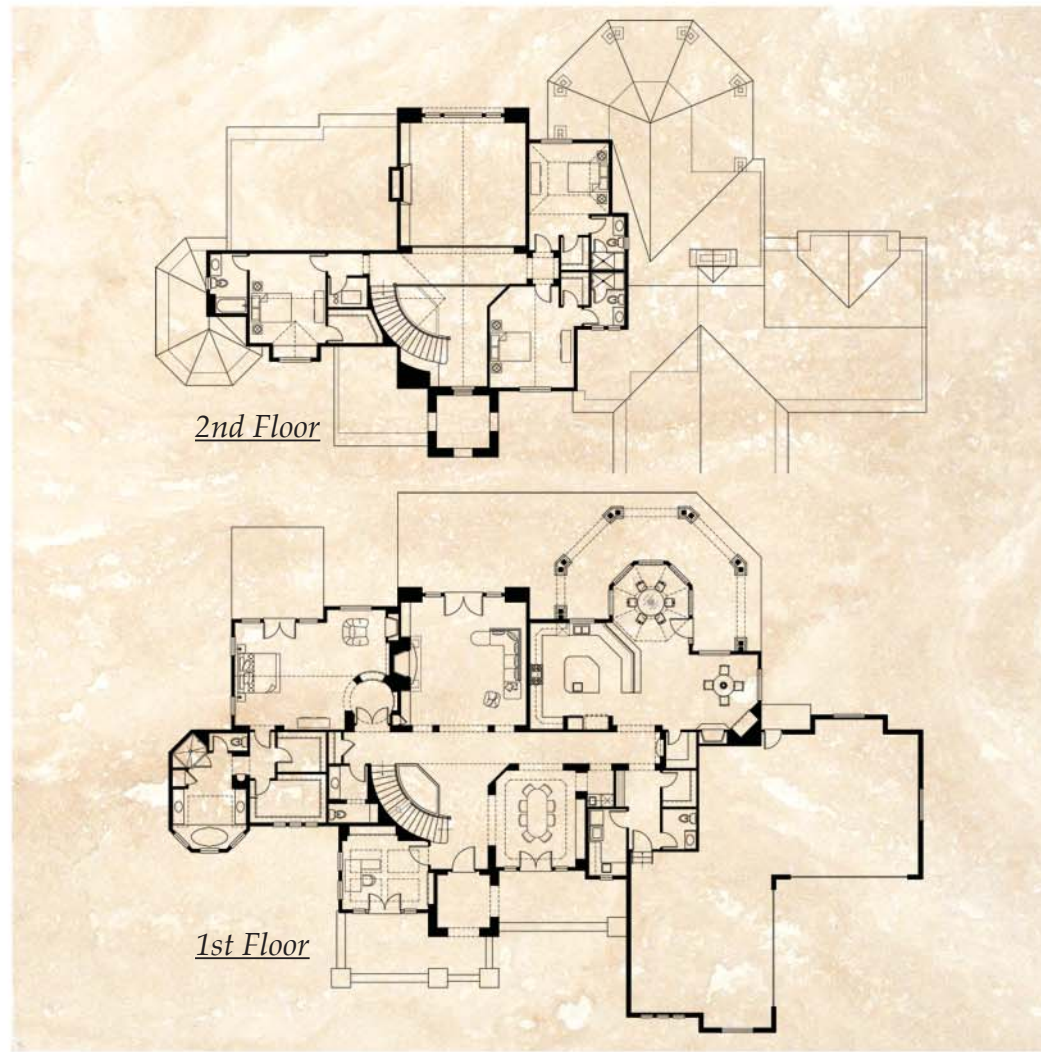
1. Tuscan Villa - *Littleton, Colorado*
2. Modern Rustic - *Hinckley, Ohio*
3. Arts & Crafts, Modern - *Brecksville, Ohio*
4. Pueblo Modern - *Boulder, Colorado*
5. Texas Hill Country - *Thrall, Texas*
6. Craftsman Remodel - *Boulder, Colorado*
7. Modern Vaulted - *Indianapolis, Indiana*
8. Tudor Revival - *Denver, Colorado*
9. Refined Tuscan Timber - *Macedonia, Ohio*
10. Mountain Craftstman - *Douglas County, Colorado*
11. Georgian Revival - *Seven Hills, Ohio*
12. Tuscan Manor - *Greenwood Village, Colorado*



Tuscan Villa

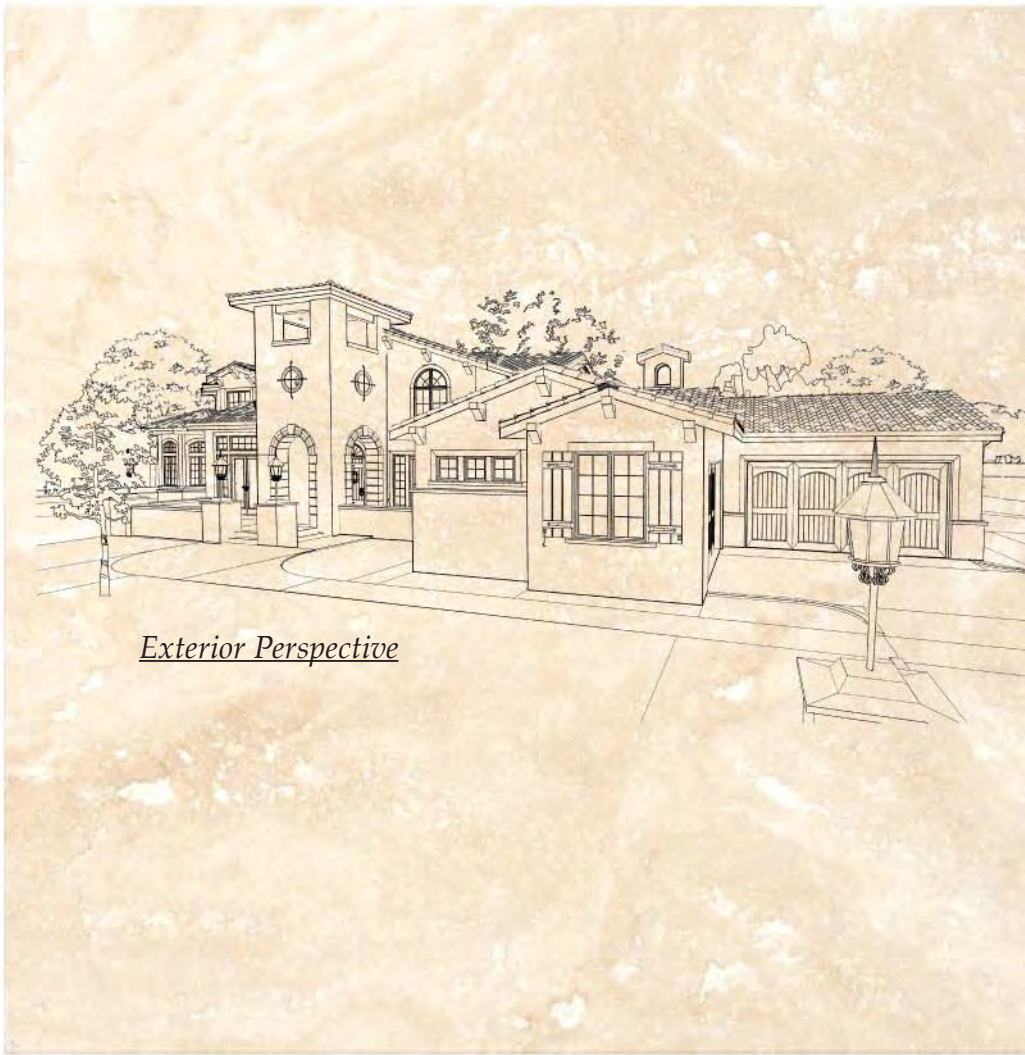
4,500 square feet
4 bedrooms, 4 1/2 baths

Tuscany is the region in central Italy known for its diverse landscape of rolling hills, mountains and coasts, and is home to vast olive groves and vineyards. Artistically, it is renowned as the birthplace of the Italian Renaissance, and it abounds in great fine art and architecture. Regional design tends to be of simple block masses of stone and stucco with gable, shed, and hipped roofs. The blocks often grow by accretion in each ensuing generation. The American interpretation of the Tuscan vernacular tends to be busier, pronouncing each separate mass, and multiplying the traditional details: arches, stone and wood corbels, ironwork, and terracotta tiles.



Tuscan Villa (continued)

4,500 square feet
4 bedrooms, 4 1/2 baths



Exterior Perspective



Tuscan interiors are influenced in tone and texture by the rich heritage of this territory, back to the ancient Etruscans and then the Romans who conquered it, through the Medieval and Renaissance periods. The inspiring region includes cypresses and olive trees, pear trees, vineyards and blossoming bougainvillea. The color scheme in this home is thus warm and natural, with shades of terra-cotta clay and creamy plaster. Deep, earthy reds in the floorcoverings and chairs are contrasted in this scene with a white limestone fireplace. The balustrade here is composed of stained timber and decorative iron. Classic mediterranean furniture completes the inviting scene.



Modern Rustic

2,400 square feet
4 bedrooms, 2 1/2 baths

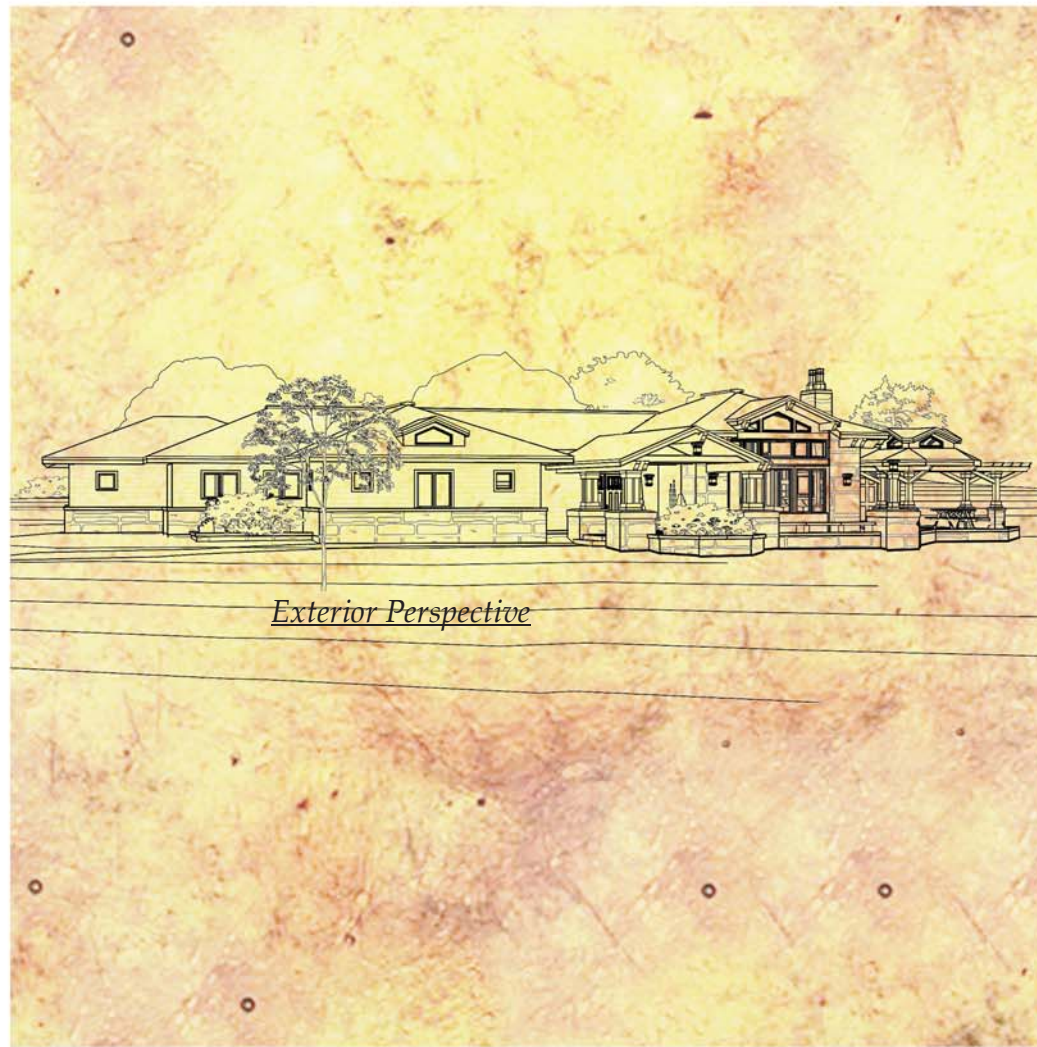


The Craftsman Style's history is elucidated in more detail elsewhere in this monograph. Suffice to say its history spans over 100 years, and evolved from Britain's Arts & Crafts Movement, a powerful statement for the value of hand-wrought craft. This new Hinckley Rustic house takes the natural materials of wood and stone and finishes them with rough, hand-hewn assemblies but with a crisp level of refinement in the details. The style is eclectic, evenhandedly referencing Prairie, Craftsman, and Modern details.

Modern Rustic *(continued)*

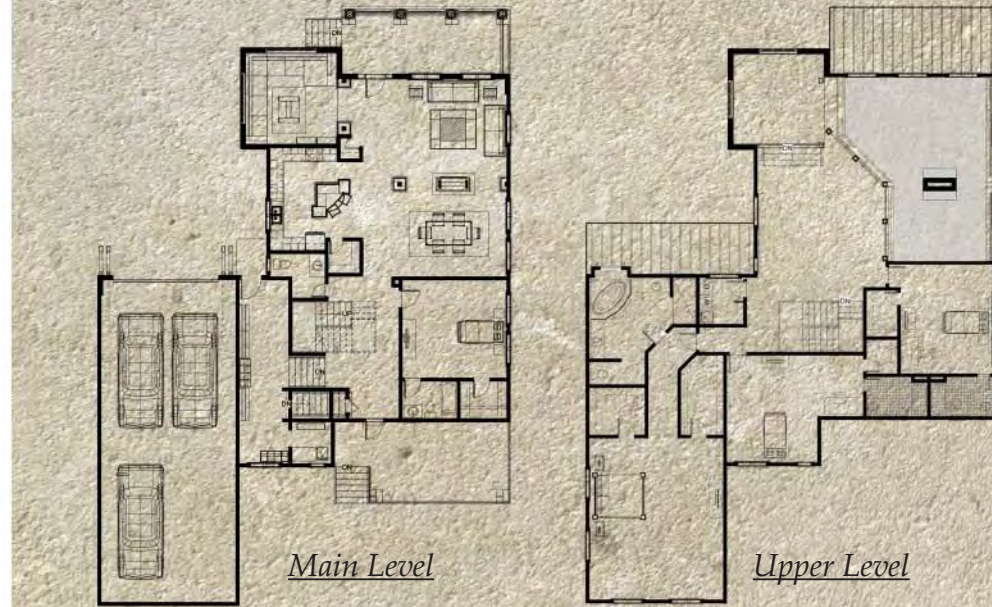
2,400 square feet
4 bedrooms, 2 1/2 baths

Craftsman Homes draw from the legacy of their artistic progenitors, and this one brings forth some of their best elements. Tongue + groove wood planks provide warmth for the flooring, and heavy timber is present in the deeply stained base and cove trim, and in the lintels at the front picture window. Wood end tables and shelving are stained a saucy red, complementing the terra-cotta tile fireplace surround. Pendant and table lamps are in the intricate Mission Style, made of wood and black steel with mica shades. Medieval style prints in this scene are by Edmund Leighton, and richly colored rugs are Sumatran and Oriental.



Modern Arts & Crafts

2,800 square feet
4 bedrooms, 4 1/2 baths



This Modern Arts & Crafts home contains a composite of natural materials, traditional craft, and streamlined and refined modern elements. The form of the house is a simple cross-gable with two wings, anchored by an asymmetrical element, a short rectangular stone tower with a gable roof. The dry-stack stone is contrasted with blue-gray hardi-board siding. The front porch is covered with a copper roof held aloft with heavy timbers and Tuscan order classical columns of glass-fiber reinforced concrete. Timber elements are also used in structural corbels at the front gable ends and at the base of dormers.

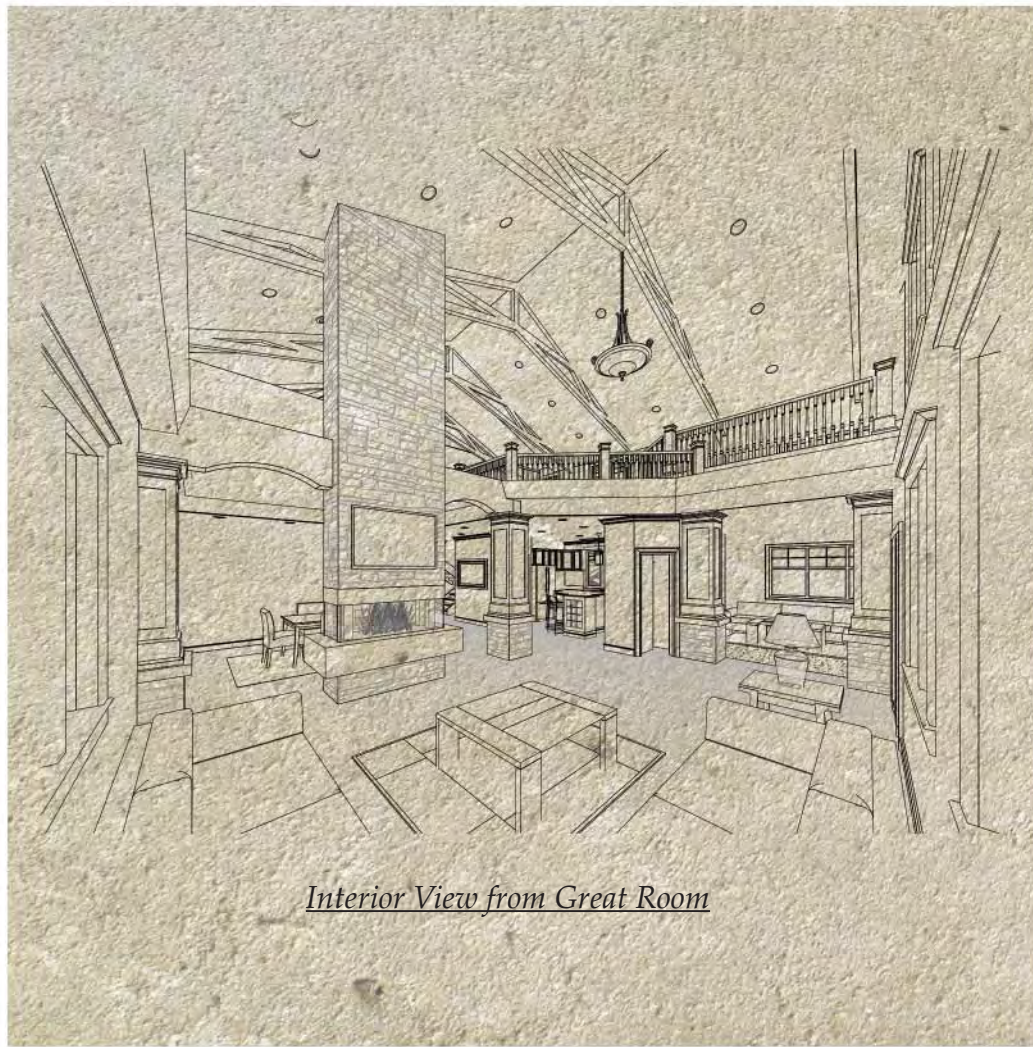


Modern Arts & Crafts

(continued)

4,800 square feet
4 bedrooms, 2 1/2 baths

The Arts and Craft Home shown here has unexpected volumen and spatial dynamism within, with an open plan given definition by a tall clean-edged fireplace open to great and dining room. Columns and arches with traditional wood moldings frame the passages on either side of the fireplace. A sitting parlor is located within the tower form, and the kitchen space is directly adjacent. The upper floor extends to a balcony space that overlooks the great and dining room, and is crowned with scissor trusses. The color and texture palette is not timid, with rich earth tones and greens balancing the stone and tongue and groove flooring.

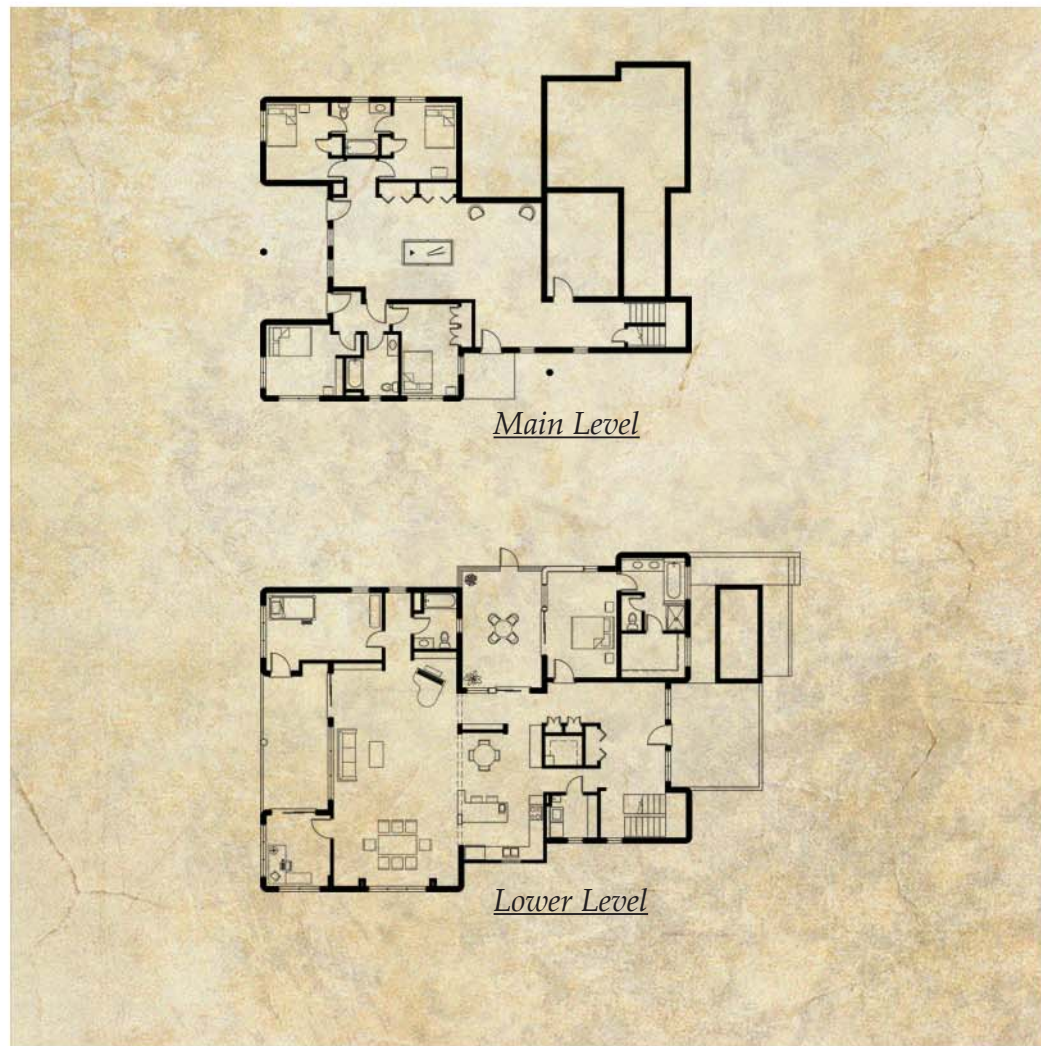


Interior View from Great Room



Pueblo Modern

4,000 square feet
4 bedrooms, 4 baths



The Pueblo Revival style arose in the American Southwest at the turn of the 20th Century as an homage to the Pueblo homes and Spanish Missions of New Mexico. The masses tend to be bold blocks of stucco with rounded, battered edges and flat roofs. Wooden corbels and roof beams, called vigas, are common features. The example here was constructed with an internal courtyard, and built of a quite modern material, a recycled Styrofoam block. Clerestory windows above the entry and great room gather even northern light.

Mentor: Ross P. Cooney

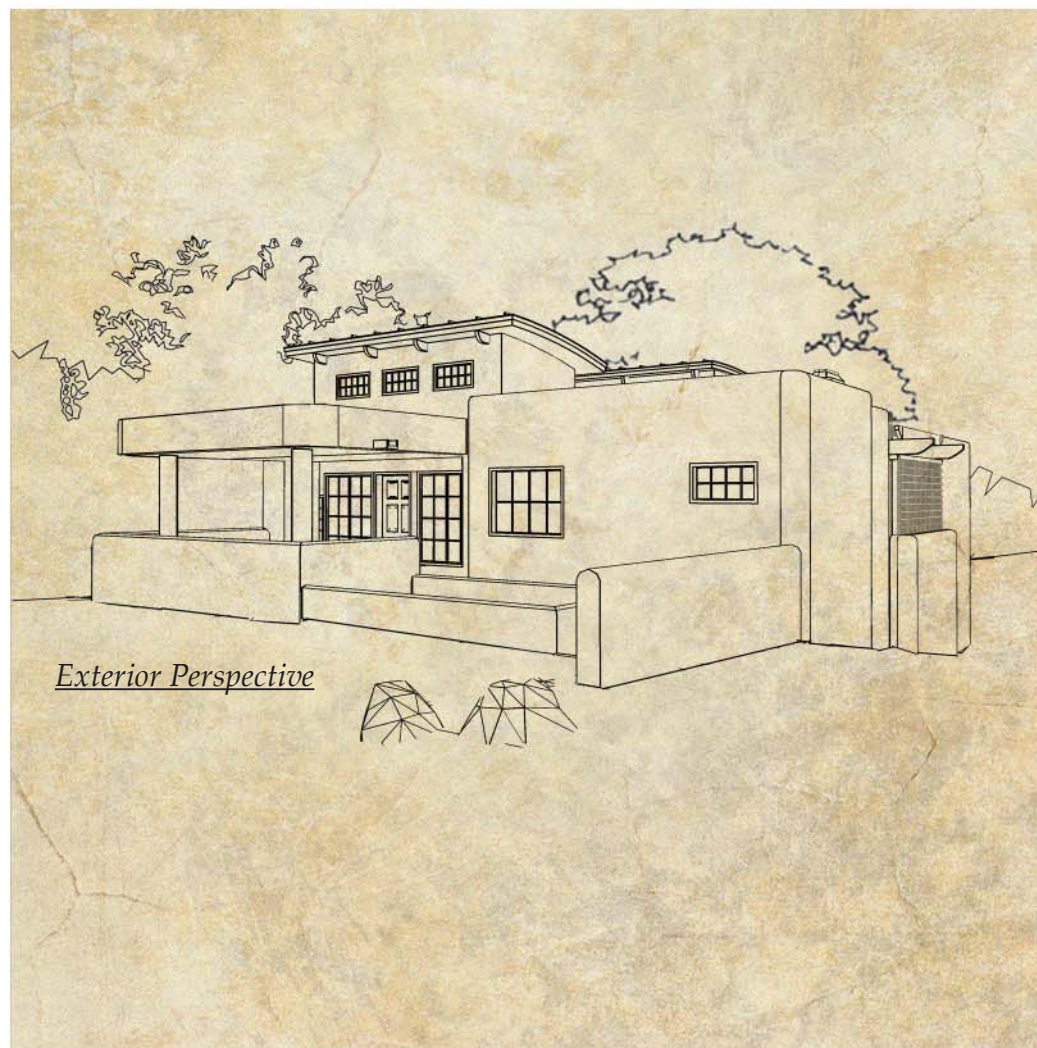


Pueblo Modern (*continued*)

4,000 square feet
4 bedrooms, 4 baths

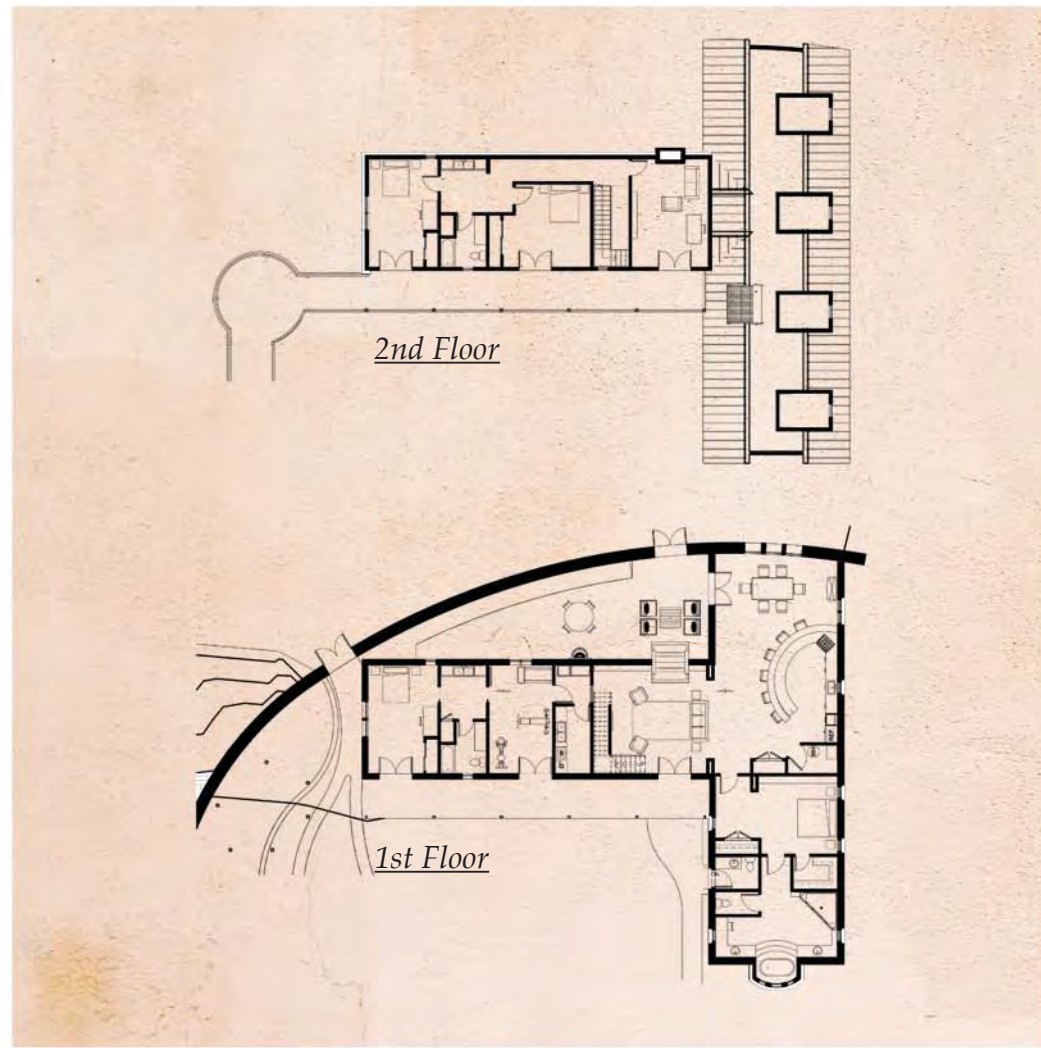
The Pueblos, Native American stacked apartment-style structures of mud and stone, were present when Europeans arrived in the Southwest, and still persist today. Pueblo revival forms and detailing were most popular in the 1920 and 30s. This Pueblo Modern house includes rough natural timber used in its structure, tongue + groove flooring, and handsome cabinetry. Modern elements provide crisp and clean contrast, and include white tile, sleek granite countertops, and stainless steel appliances.

Mentor: Ross P. Cooney



Texas Hill Country

6,000 square feet
4 bedrooms, 3 1/2 baths



The Texas Hill Country consists of twenty-five counties in Central and South Texas, hilly terrain at the edges of Austin and San Antonio. The historic vernacular houses in this rural region were made by the European immigrants who settled here, who built with available natural materials in lean economic times. The settlers constructed simple block shapes in limestone and sandstone, with gables and sheds constructed in rustic timber, often with exposed structure. The example shown here is an entire residential complex, with a private residence, a bed-and-breakfast, and a pool and cabana.

Texas Hill Country *(continued)*

6,000 square feet
4 bedrooms, 3 1/2 baths



*Exterior Perspective
(Revised Scheme)*

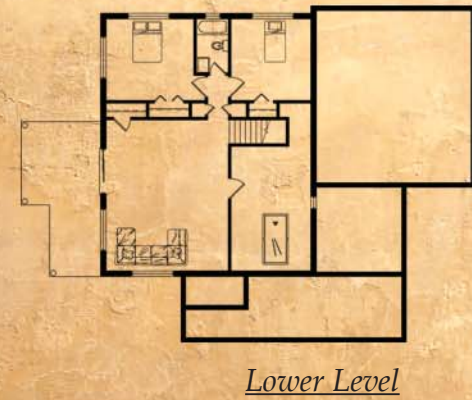


The Texas Hill Country style originates in a blending of mission-style buildings with farmhouses of Germanic settlers, and its accents tend to be traditional and rustic. However, a blending of the materials, colors, and natural fabrics of the area with modern amenities can make for an interior at once luxurious and cozy. Note the light colored timber trusses contrasting with deeply stained trim, the rugs with Southwest patterns and hide + hair, all grounded on a two-toned stained concrete floor. The chandeliers are of distressed bronze, and original paintings are shown along with reproductions of work from the Amon Carter Museum in Dallas.



Craftsman Remodel

2,400 existing square feet
400 square feet addition
3 bedrooms, 2 1/2 baths



The Craftsman Style was selected to overhaul this box-like contemporary house which needed a real boost in character. This home was sited on a promontory with a spectacular view of the Boulder Flatirons of the Colorado Front Range, but was a rectangle box lacking form and details. For the remodel, the roof was over-framed to create a new front gable, supported by outrigger beams. A timber pergola protects the new kitchen addition, and an unusual asymmetrical entry completes the composition.

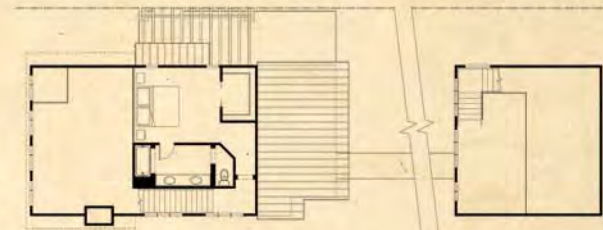
Mentor: Ross P. Cooney



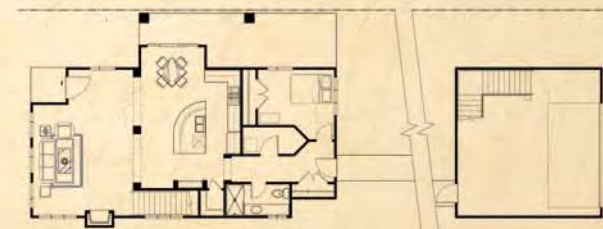
Modern Vaulted

1,500 square feet
2 bedrooms, 2 baths

The Vault is an ancient form, in use for millenia, efficiently transferring gravity and lateral loads to a base. This asymmetrical vault is held aloft by glu-laminated arch timbers, a structural timber product developed in the 1930s, with major advances in ensuing decades. The roof is copper with an advanced deep green patina, and it shelters an open, expansive, comfortable living space. A Modernist inspired steel and glass curtain wall system allows ample natural light to enter the home.



2nd Floor



1st Floor

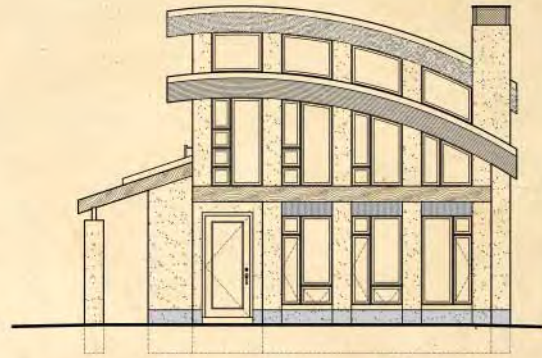


Modern Vaulted

1,500 square feet
2 bedrooms, 2 baths

Although the Footprint is Small, this home feels remarkably spacious, thanks to the open-to-below space afforded by the master bedroom loft. Because the roof form is asymmetrical, it opens to house corner, emphasizing the view.

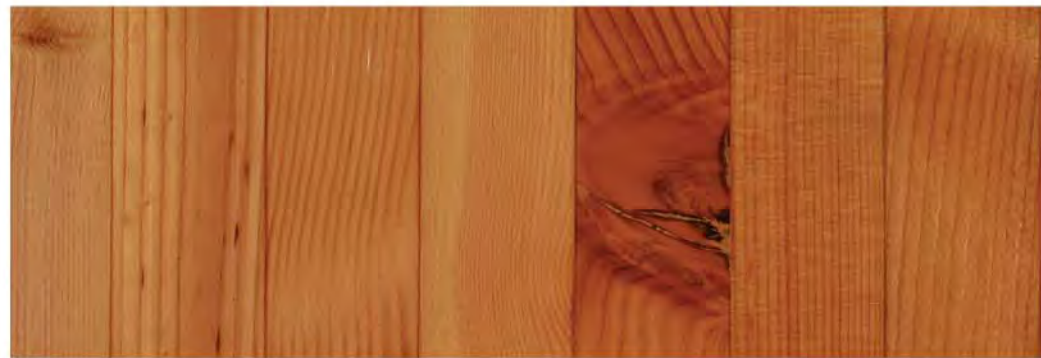
The design process involved a careful attention to mathematical relationships and planar geometries, with strong relationships between the shapes and sizes of floor planes, walls and wall panels, windows, and doors, and structural members. The result is a harmonious space, and a feeling of overall clarity and repose.



Front Elevation (not to scale)



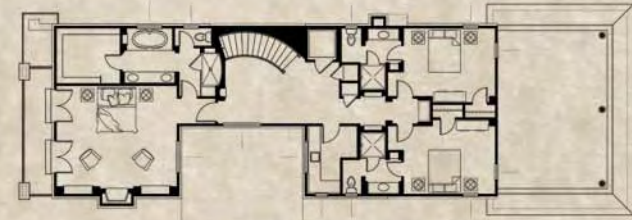
Side Elevation (not to scale)



Tudor Modern

3,400 square feet
4 bedroom, 4 1/2 baths

The Tudor Style is the final development of Medieval architecture in England, appearing during its namesake period in the late 15th through the 17th centuries. The original Tudor included strong geometries and construction of limestone and brick, with timber framing and wattle and daub present in buildings for commoners. The first Tudor Revival in America occurred in the early 20th Century, and imitated the forms and construction of the common houses and cottages. This house is a modern abstraction, Tudor in form and proportions more than in detailing. The wide sheltering arch creates an upper loggia for the Master bedroom.



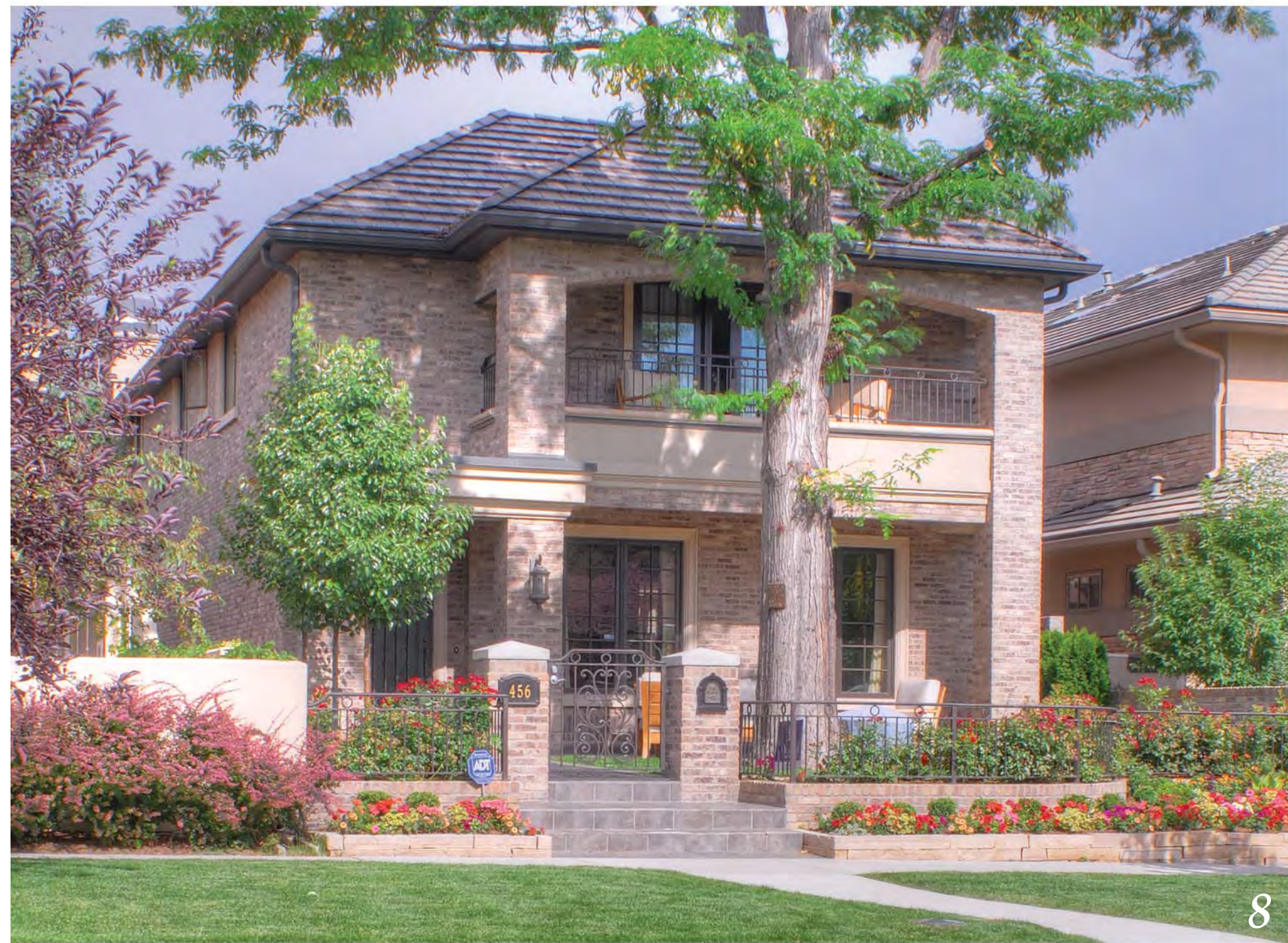
2nd Level



Main Level



Lower Level



Tudor Modern *(continued)*

3,400 square feet
4 bedroom, 4 1/2 baths



Exterior Perspective

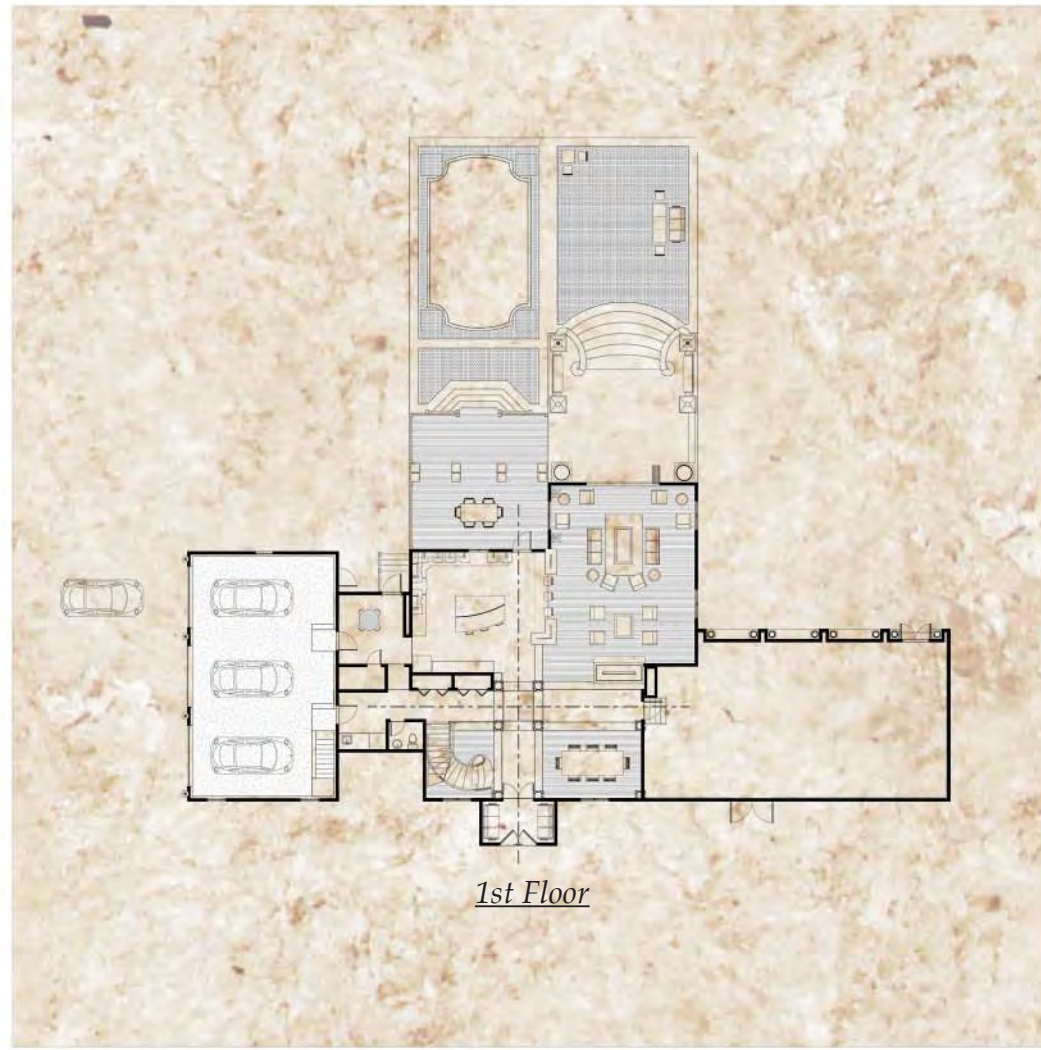


The Tudor Style has experienced a resurgence in popularity since the 1920s. This home conveys the characteristic warmth and expressive detail that exemplifies this traditional movement. The bold coffered ceiling provides a framework for the kitchen counters, cabinetry, and bar island below. Suspended lighting fixtures are of burnished steel, bold and oversized. Wood corbels support the kitchen hood. White and natural fabric woven chairs are present at the bar and kitchen table, with a white leather couch at the adjoining sitting room. Generous glazing allows natural light in from the West patio.



Refined Tuscan Timber

5,000 square feet
4 bedrooms, 3-1/2 baths



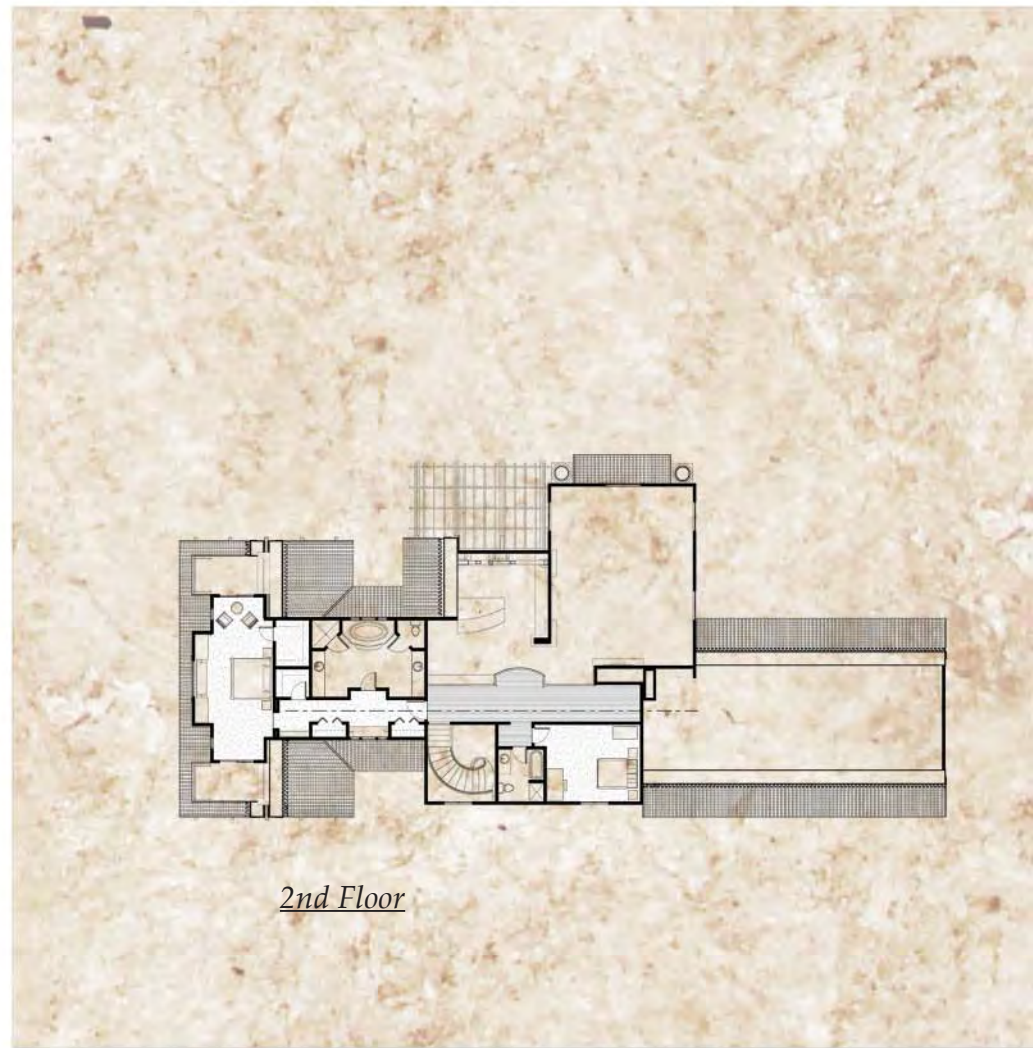
The Refined Tuscan Timber style emerged as a New Architectural Movement combining the refined details drawn from Classical Compositions of the Ancients, particularly the Tuscan order, with the hand-crafted artisanship of the Early-20th Century. Timber in this home is now fully detailed with modern techniques, both within and without. The home depicted herein was an existing building, originally constructed in the 1980s in a non-descript Colonial style, absent of detail and elaboration. The owner desired the home to receive a full and exhaustive renovation in form and style, to in essence be made anew.



Refined Tuscan Timber

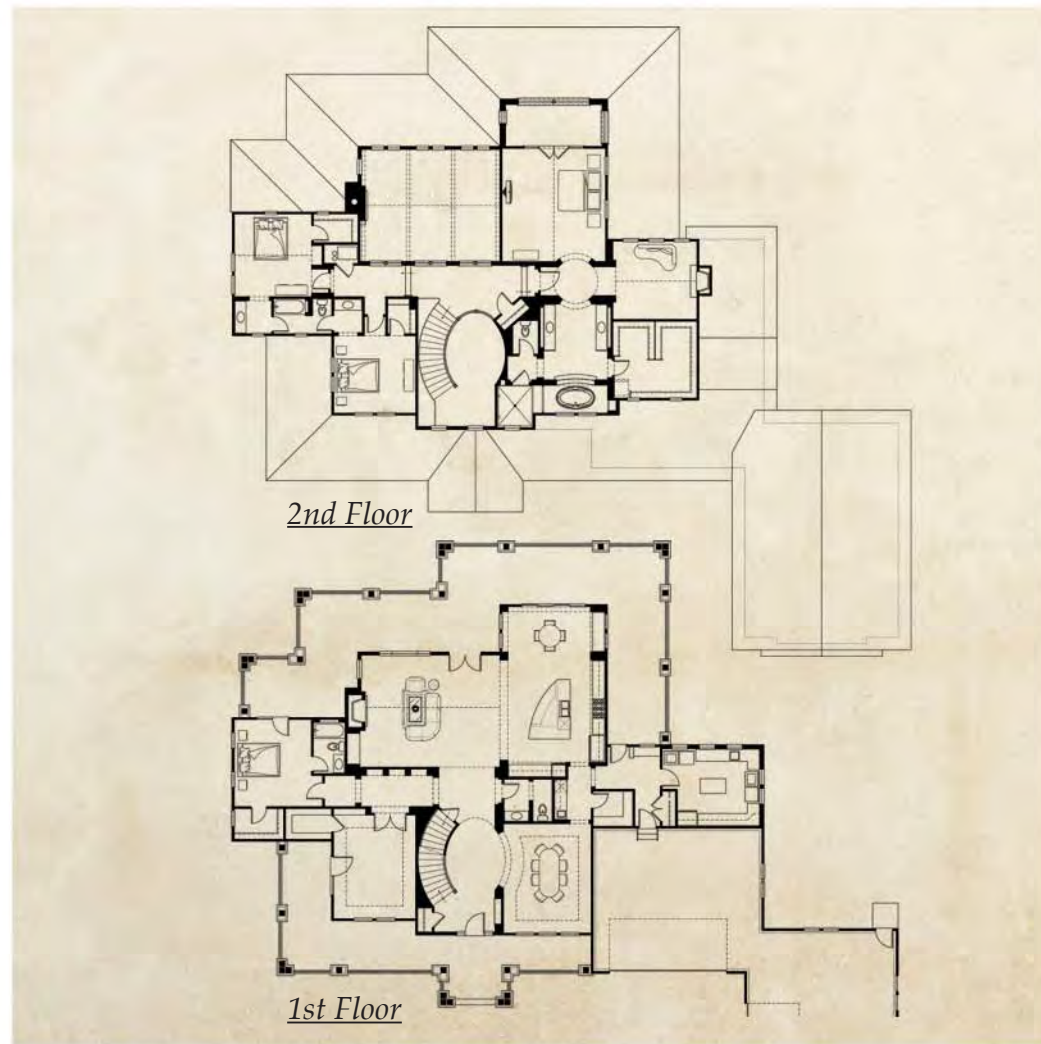
5,000 square feet
4 bedrooms, 3-1/2 baths

The Tuscan Proportions and Detailing are expressed on the exterior with column orders in the gargantuan order in a deep red, and in an ordinary order in the entry pergola and trellis in white. This enunciates the hierarchical order of the home, with the primary gathering space given highest prominence. Dormers with outriggers punctuate the main roof. The detailing is also brought from the exterior of the home within. The timbers are present in the roof structure, and the stonework is carried from the outside in. Arches and vaults are utilized in the Great Room, the kitchen, and the upstairs bed chambers.



Mountain Craftsman

5,000 square feet
4 bedrooms, 3 1/2 baths



The Bungalow is a moniker usually reserved for a small Craftsman style home in the California tradition. Despite its grand size, this home design shares many commonalities with the Bungalow, a style first popularized by the Greene brothers, Charles and Henry Mather, in Pasadena. The multiple broad gables, exposed timber rafter tails, outriggers with brackets, and expressed structure all exemplify this historic style. Natural materials are used throughout, including a base with locally quarried sandstone, two tones of wood siding, and richly stained entry and garage doors.

Mountain Craftsman (cont'd.)

5,000 square feet
4 bedrooms, 3 1/2 baths

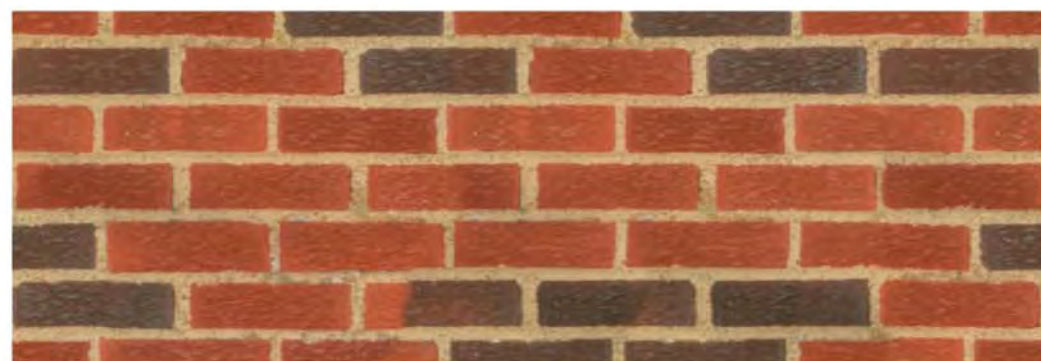
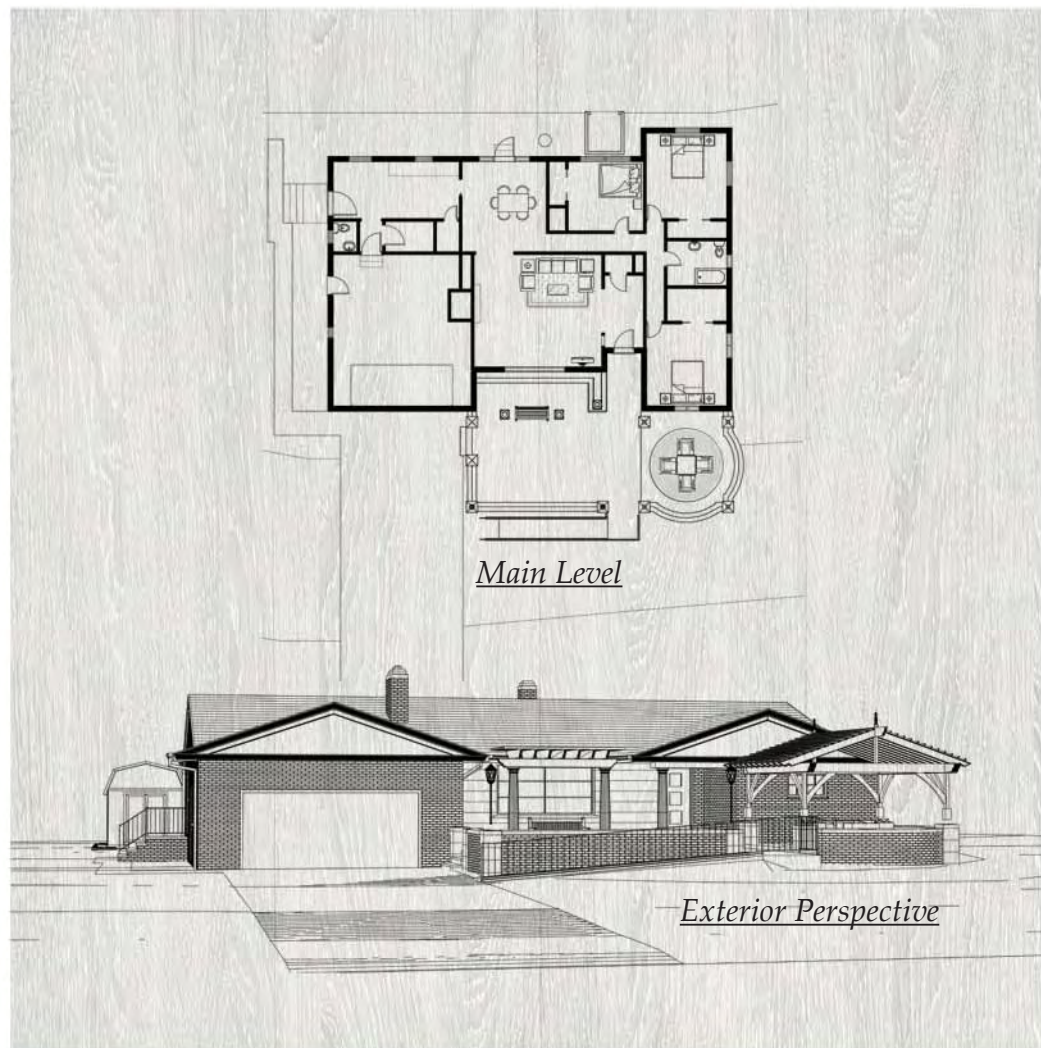


The Bungalow is reinvented in this design, as the original formulation of this style called for home plans with small interconnected, private chambers, generally with low ceilings. Today's home clients generally desire open plans with vaulted spaces, which are certainly present here. But the connection between the interior and exterior of the home is still present, so the wraparound porch feels like an outdoor room, and an extension of the great room. The room is well-proportioned, and allows for a tall ledge-stone fireplace and rough timber trusses. The ample south light from the clerestory windows brings out warm colors in the wood.

Georgian Revival

5,000 square feet
4 bedrooms, 3 1/2 baths

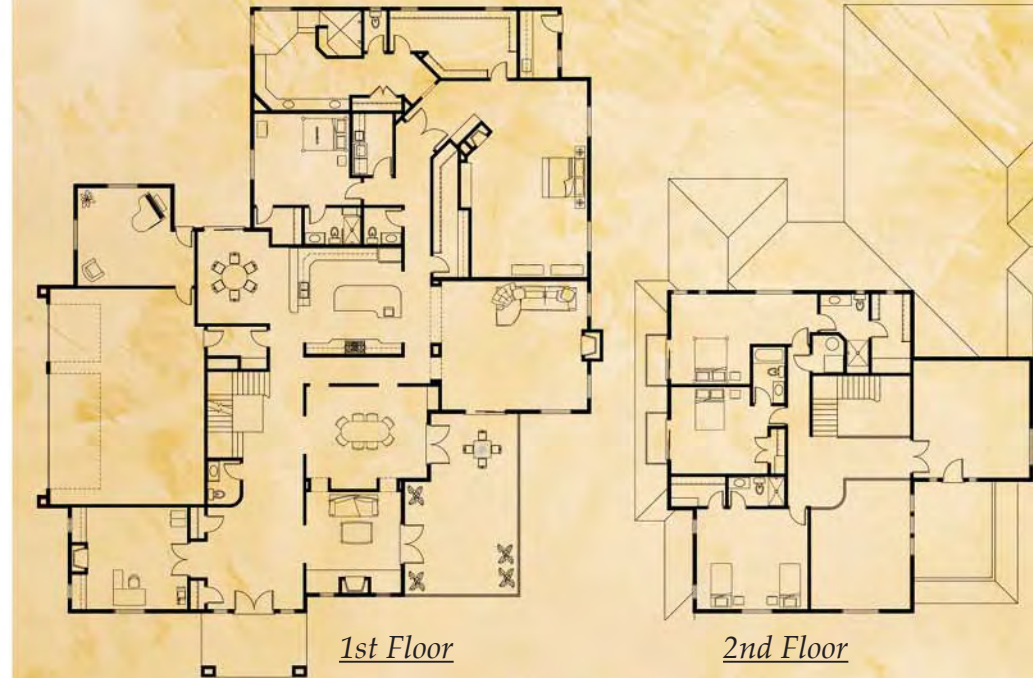
Georgian Architecture was an 18th century movement characterized by proportion and balance, commonly rendered in ashlar stone and slate. It is the English interpretation of formal classical architecture, informed by direct study by its adherents of the works of Italian Renaissance masters such as Andrea Palladio. The style was widely disseminated to English colonies, but interpreted in common brick with stone accents and white clapboard. Pattern books were instrumental in its popularity. This home is a mid-century colonial contrivance, made complete with a new entry terrace and trellises.



Tuscan Manor

4,000 square feet
4 bedrooms, 4 1/2 baths

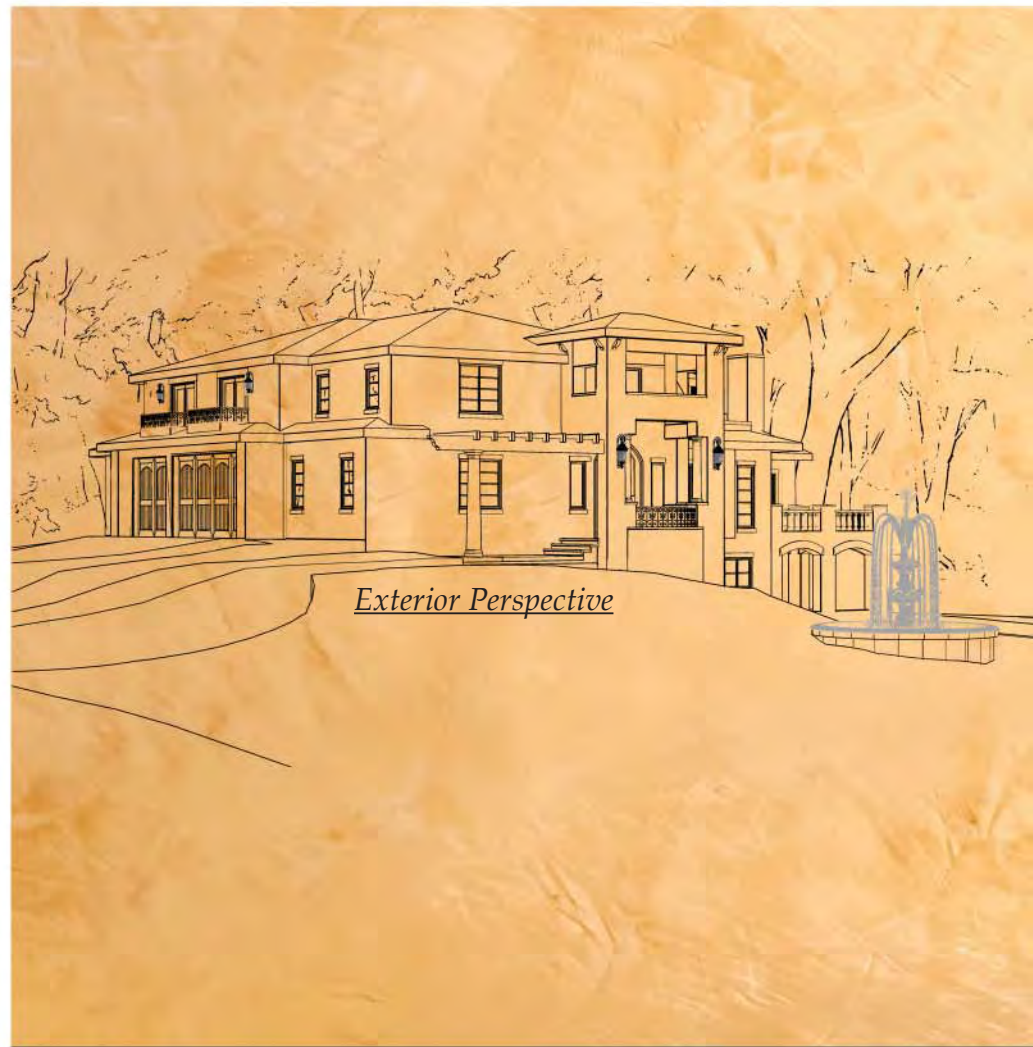
The Tuscan Vernacular Revival was first introduced by Philadelphia Architect Charles Z. Klauder on the University of Colorado's Boulder Campus in 1919. The style imitates rural Tuscan buildings in their relaxed grouping of forms, arranged in a loose, organic way. In short, the style is meant to emulate the way buildings grow and come together over time in an Italian hill town. The language is wrought in rough, random stone and stucco with clay tile roofs. Its vocabulary is gables, sheds, and the occasional hipped roof. Arches and flat openings are both present. But mostly, one notices the playful quality of the building shapes.




Tuscan Manor *(continued)*

4,000 square feet
4 bedrooms, 4 1/2 baths

The Tuscan Vernacular home interior evolves from farmhouses in a region of beautiful terrain, a patchwork of hills and woodlands. So it follows that its interiors should be colorful, with artistry to match the countryside. The floors and fireplace surround are richly stained a deep red, a color also found in the window treatment. The wall plaster is hand-troweled, accented with elegant moldings. The provincial settee is balanced by the metal framed center table. The composition is framed by the pair of sculpted angels, proclaiming a harmonious entrance to the room. The French doors open to a western patio, facing a wooded site.





© Copyright 2018 Lobas Architects